

## HELLIFIED SOLDIER

P.C.H

*SHOTGUN GUY EDITION*

### INSTRUCTIONS

#### PRINT:

Always print in high quality, use photo-print settings if applicable.

#### PAPER:

While I use 225 GSM Card for my paper-crafts, anything between 160 and 225 will work well. If you don't have card, Standard 80gsm printer paper will work, but you'll have a harder time getting it to stay in shape.

#### CRAFTING:

Use a sharp craft knife to cut out the shapes, you can lightly score the folds to make it easier if you wish.

Use a thicker glue that will not soak through the card, it pays to test a glue before getting started.

Cut and Fold the individual shapes, and glue them together using the marked areas, these include either an arrow for a direction Guide, or a number to indicate which tab to glue and place first.

Most important, stay classy.



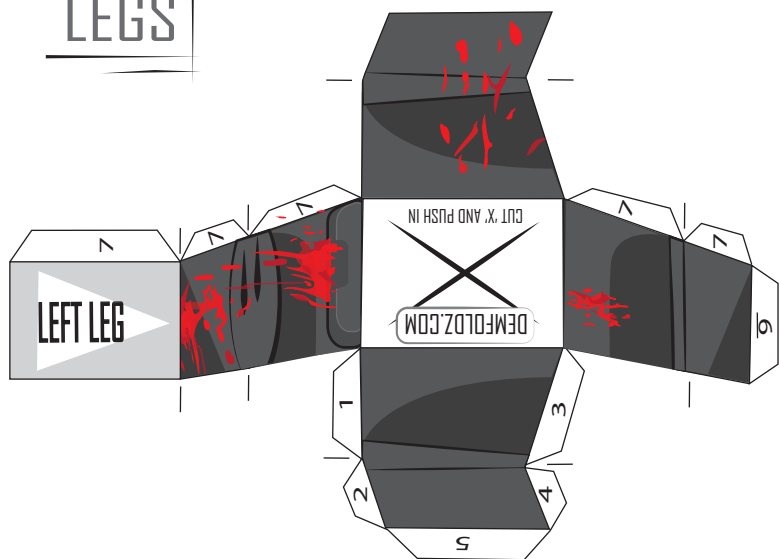
GO TO [DEMFOOLDZ.COM](http://DEMFOOLDZ.COM) FOR A VIDEO TUTORIAL



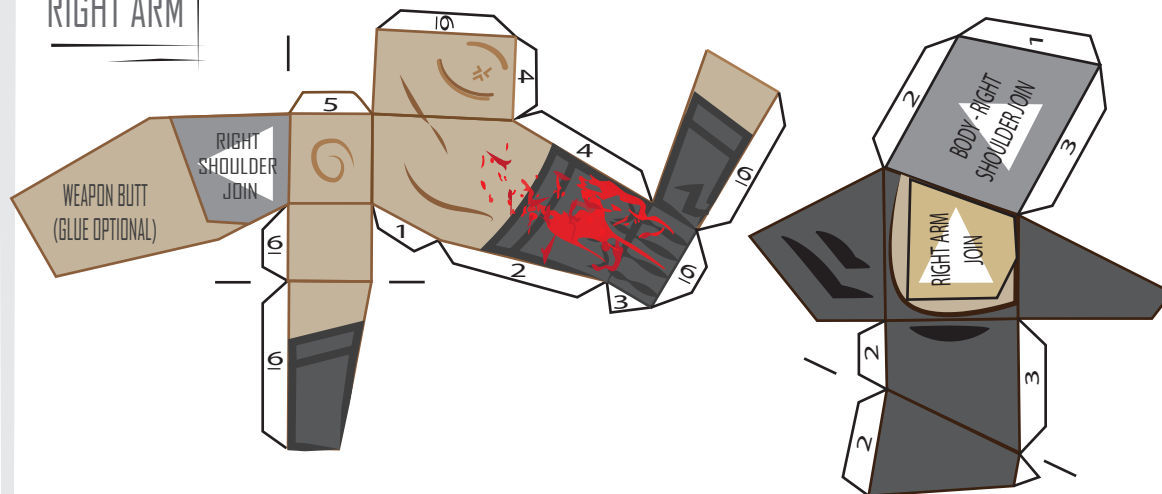
## BODY



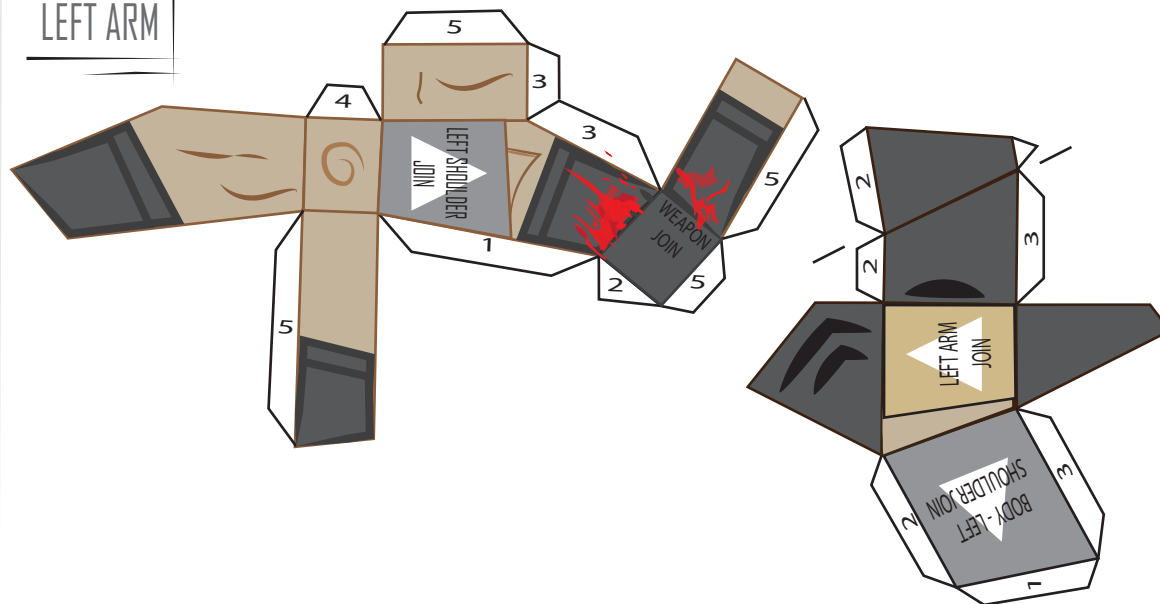
## LEGS



## RIGHT ARM

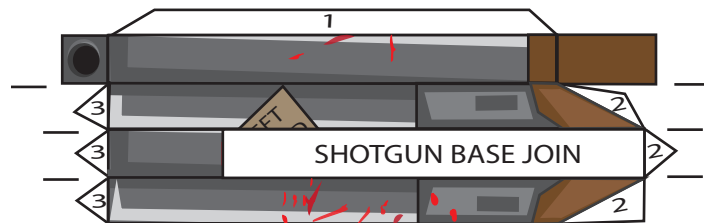


## LEFT ARM

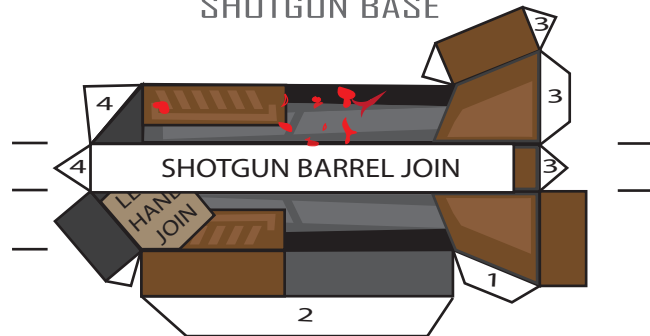


# ZOMBIE SHOTGUN

SHOTGUN BARREL



SHOTGUN BASE



SCRIBE ALL SMALL TABS. USE RULER.